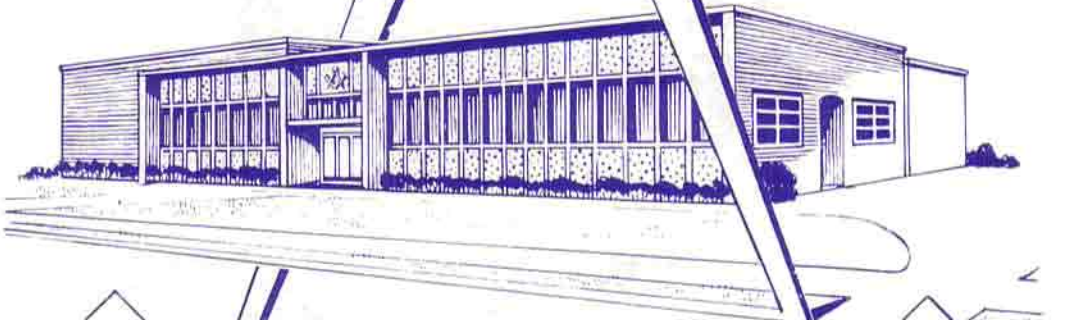


A MOVE

IS

A MUST



**G**

April 1, 1958

God builds no temples on earth. By His plan, that labor has been left to man. God sends no temples from the skies. Out of our hearts they must arise.

EDGAR A. GUEST

In 1905 less than 600 member Masons raised approximately \$60,000 and built the present Woodward Temple. Many masons have had the use of this building and the facilities therein without any cost other than operation and maintenance. Now we must work together and pledge to replace this worthwhile edifice for the future generations to come.



MOST WORSHIPFUL PAST GRAND MASTER, JOHN W. BARKLEY SAYS:

"Woodward Masonic Temple has long been a symbol in its community of all that Masonry stands for. Now changed conditions necessitate the building of a new Temple, which for years to come will serve Masonry in the new location as the old Temple has served in its location in prior years. The move is to Lyndhurst, which is sharing in the tremendous suburban growth which is occurring in the vicinity of Cleveland. Woodward Lodge—proud Woodward—and the other bodies associated with it in this project, could not do less than meet this challenge and bring the new Temple project to early successful conclusion. In taking this forward step, Masonry cannot, must not, will not, fail."

☆☆☆☆

Brethren:

"A Masonic Lodge is a fraternal order made up of men banded together for high altruistic and practical purposes. Masonry is the banding together of many lodges and associated bodies. However, all this is impossible without a business-like organization dedicated to provide facilities for the execution of these precepts and purposes.

The Woodward Temple Company is one of these business corporations founded on the free enterprise system to provide the necessary complete working tools for Masons.

We need new facilities, and that's a must. As president of the Woodward Temple Company, I want to remind you of your total obligation. Your share must be purely your own decision."

W. David Allen,  
President, Woodward Temple Co.

## WOODWARD TEMPLE:

### GROWTH AND A GROWING PROBLEM

In the year 1875, thousands packed Public Square in Cleveland to watch the ascent of the buffalo. Up went the big balloon. Up went its wicker basket. Up went the basket's ballast, a professional aeronaut and three newspaper reporters. They soared out over the lake, then south and inland until a threatening storm brought them to earth.

Earlier the same year, another event took place. Woodward Lodge was founded. Less spectacular than the take-off of the buffalo, it didn't attract thousands. In fact, only 18 men were involved. But the course charted by these 18 pioneers for Masonry was to last much longer than a one-day balloon trip.

They picked Doan's Corners, then little more than a crossroads to the east of Cleveland, as the location for Woodward Lodge's first home. It turned out to be a wise choice. The crossroads was destined to grow, and as a result, the lodge progressed and prospered.

By 1893, Woodward was moved to a second, more spacious home in the same neighborhood.

Continued growth caused other Masons of vision to promote the building of a temple. And in 1906, the present temple was completed and dedicated to those who made the dream a reality.

Today, we are faced with a new challenge.

The quiet crossroads location has changed considerably. Even the name, Doan's Corners, has been lost in the change. Now it's Euclid Avenue and East 105th Street, one of the world's busiest intersections. During rush hours, the streets are lined bumper to bumper with cars and buses. Land along the street is built virtually solid with stores, restaurants, banks, taverns, bars, and theatres. This commercialized location is no longer the proper place for a masonic temple.

This location is also very inconvenient to reach for a majority of the lodge members. Many have moved out of Cleveland into the more distant suburbs.

Woodward Temple like other temples, would need a lot of renovating to make it modern, more usable and attractive. Parking facilities are meager and costs high; at 25 cents per evening, parking alone may run into a few dollars each year.

All this is true not only of Woodward, but also of other Masonic bodies meeting in the same or similar areas.

In short, *A Move is a Must* if Masonry is to continue to grow, be more fully active and prosper.

## WHY A MOVE IS A MUST

Here are some important reasons: It will put us nearer to the majority of our active members. The site that has been picked is at 5500 Mayfield Road in Lyndhurst. This pleasant suburb is not only closer to current membership, but it also is in the center of an area which offers a fertile field for harvesting new members. It is also expected that greater attendance will be had at all functions.

In addition, the new building would give us room for future growth. The new building will contain 24,000 square feet of floor space with two lodge rooms. The old contains 23,000 square feet and only one lodge room. Plans call for ample parking at the Lyndhurst location, a lot that can handle 192 cars as compared to a 42-car lot at the old site. It will give us a more useful and practical plant with appropriate lobby, recreation facilities and storage space for paraphernalia. Also decent office space for the many secretaries and meeting rooms for the host of committee activities. You will have a place where you can be proud to bring your wife and friends. More than all these, the building will enable us to bring the younger people to us for proper future development. Real air conditioning is provided the year round. All this and free parking too.

One of the most frequently asked questions; "Have you made plans to include Rainbow Girls and DeMolay Boys Youth Groups in the new Temple?" The answer is—YES!

Realizing some of the difficulties the Boys of DeMolay and the Girls of Rainbow encounter, we know the Masons of the community will extend themselves to the utmost, knowing that this will be a home for their children in their trying years.

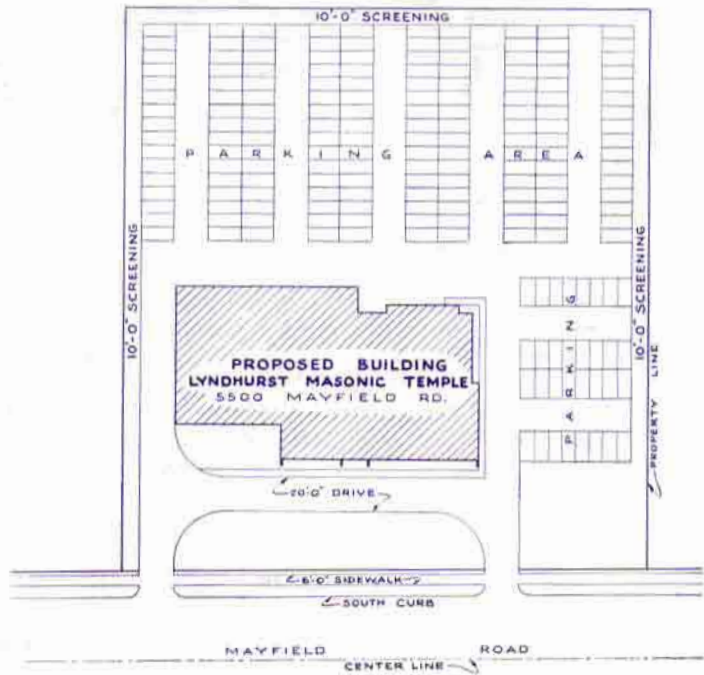
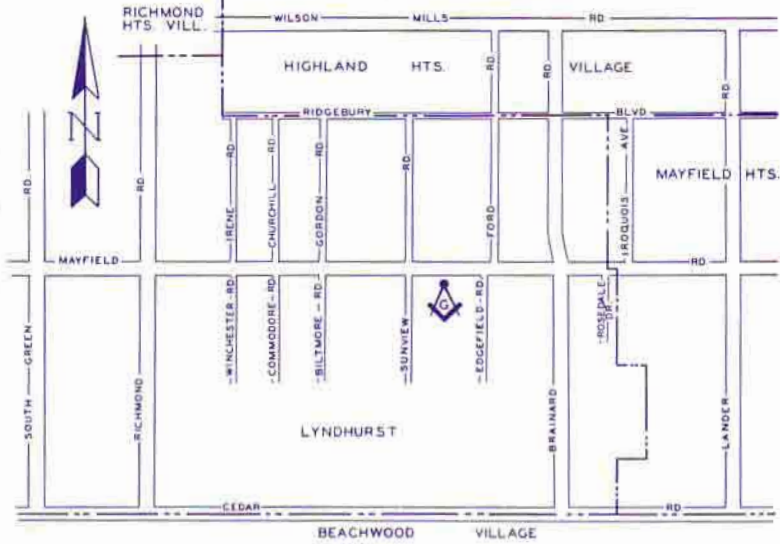
Let us be sure of our intentions. Let us leave upon this earth our mark of progress and contribution towards good.

Youth unplanned for, soon plans its own program. We of experience must pass goodness and guidance towards God's ends upon this earth.



NEW SITE, 5500 MAYFIELD ROAD

# LOCATION OF THE LYNDHURST MASONIC TEMPLE



**SITE PLAN**

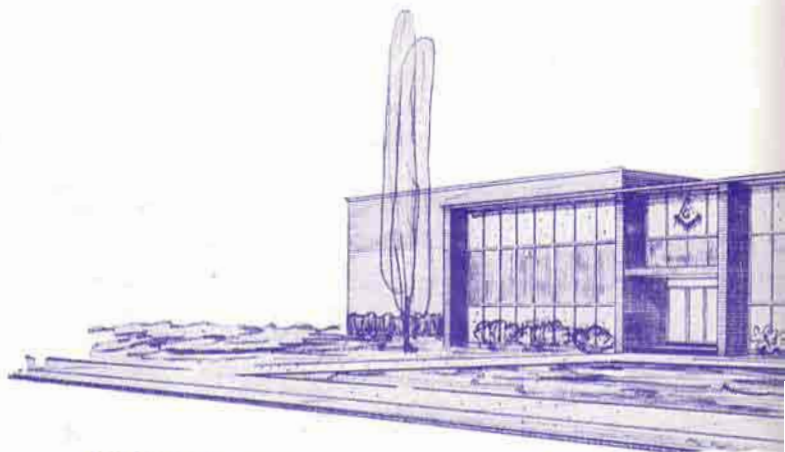
## PLOT PLAN

The site of the proposed new Temple building is on Mayfield Road,  $\frac{3}{4}$  mile east of Richmond Road, and about 200 feet east of Sunview in Lyndhurst. The lot is rectangular in shape with a frontage of 305 feet on Mayfield Road and a depth of 332 feet, comprising a total of 2.31 acres.

The plans call for a brick building, 178' wide by 102' deep at the maximum overall dimensions. The set-back is 65' with the building located slightly east of the center of the lot 30' from the east property line. The property will be screened on three sides with a 10' strip of crab shrubbery and protected by a 6" x 6" concrete curb.

There will be two driveways, one on the west side for in and out traffic, and one on the east side for exit only from the parking area.

The parking area will be black topped, properly drained and lighted, and have room for 192 cars. The area in front will be a smooth lawn with a few trees and evergreens around the building.



## GROUND FLOOR

There will be a 44' x 75' banquet hall (area 3,300 sq. ft.), on the ground floor which will seat in excess of 420 people. In conjunction with the banquet hall, to the east, there will be a 28' x 40' kitchen (area 1,120 sq. ft.), plus plenty of kitchen storage area. The banquet room may be used for dinners, dances, and other social affairs. For safety reasons, there will be a direct exit to the outside.

Adjoining the banquet hall are men's and women's lounges, a cloak room, a small lobby, and a large storage room for chair and table storage, as well as three separate stairways leading to the main floor. A special curtain will divide the banquet hall for dual use. The kitchen will be accessible to both halves.

The 12 foot high ceiling of the banquet hall, kitchen, and lobby, will be acoustically treated. Floors are to be of asphalt tile and the stairs to be of steel construction. On this floor there will also be a special committee room 560 sq. ft., and three offices 100 sq. ft. each, and an equipment room housing air conditioning and heating equipment. A lobby of 300 sq. ft. will be located at the foot of the main stairs just off the banquet hall.

## MAIN FLOOR

The main floor will have a large lounge lobby, (49' x 44') approximately 2,156 square feet in area, easily accessible through vestibules from both front and side entrances. The layout of the main floor was governed by the desire to have two lodge rooms, both of which face east, and which could be used simultaneously without interfering with each other.

The lounge lobby, cloak rooms, and rest rooms are located so that they can be

readily reached from either of the two lodge rooms. Space is provided for a janitor's closet, three secretarial offices, an office of the building, and a large committee room on this floor.

The lodge rooms are not identical in size; #1 is 61' long and 50' wide, with a 15' east with 165 permanent seats; #2 is 53' long and 40' wide, with a 15' platform and 104 fixed seats. Preparation rooms, closets, and space for the tylers are provided for adjoining each lodge room.

Storage areas and dressing rooms are provided for the Blue Lodges, Commandery, Chapter, Council, and Eastern Stars. A recreation room (20' x 28') is also on this floor. This room is off the main entrance and will contain two pool tables and six card tables.

## EXTERIOR VIEW OF THE BUILDING

The design of the proposed new Lyndhurst Temple is in the modern style of architecture with simple, graceful lines accentuated by an offset east wing and a difference in roof levels. The glass and aluminum windows in the lobby follows the



latest trend and gives an up-to-date design that will make our building a stand-out among Masonic temples for many years to come.

We have in mind an exterior of buff colored face brick on the two sides, with stone trim, porcelain enamel panels and glass to carry out the treatment of the front. Only the lobby area and the recreation room will have windows, while the long sweep of brick work around the east lodge room will be broken and enhanced with stone plaques which could carry various masonic symbols.

In order to avoid the extra cost of steel columns, the building is designed as a wall bearing structure, with the roof supported by steel joists resting on the brick walls. The roofing will be of tar and gravel laid over steel decking.

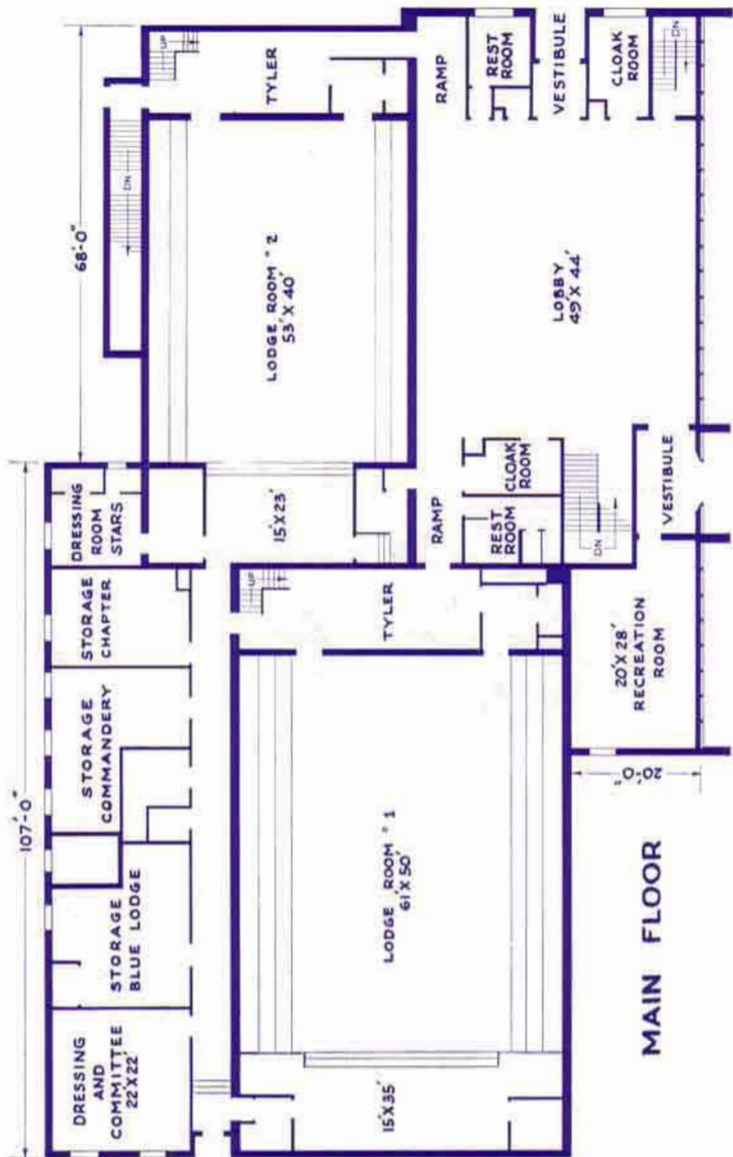
The canopy over the entrance walk will be covered with aluminum to blend with the aluminum doors and windows. The trim around the windows, as well as the coping on the parapet walls is to be of limestone.

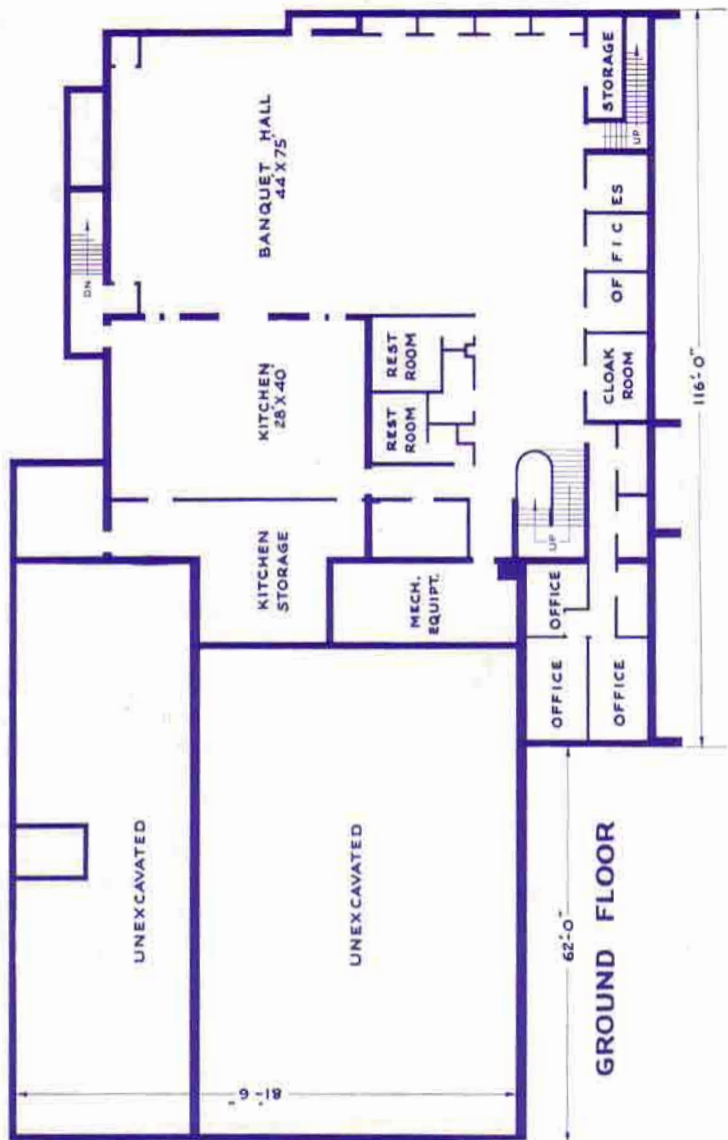
The building will be fully air conditioned and will be completely incombustible with concrete floors on steel beams and joists.

It is planned to equip both lodge rooms for the Blue Lodge work, but one of them will have the additional facilities required for meetings of other bodies such as Eastern Star, Chapter, Council, and Commandery.

## SECOND FLOOR

The organ lofts, accessible by stairs from the tyler's room below, are located on this floor, together with two smaller storage or dressing rooms above each lodge. Room has been provided above the stages for curtains to be raised and lowered.





## THE CHALLENGE

The day after tomorrow is now in your hands. What are you going to do about the future of Masonry? A true mason gives to the future and asks nothing from it. His prime objective—not what it can do for him, but what he can do for those to come. Freemasonry does not mean getting something free. Freemasonry demands great responsibility from us and at times unselfish sacrifices.

Here is what your most recent Past Master has to say: "At the turn of the century, our brethren planned well for our Masonic activities. Let us now provide equally well for those who will continue to practice the principles of our order at the close of the century."  
Roy Bundy, P.M.

From a Past Grand Master: "How gratifying it is to know that Woodward Lodge is working so effectively to erect a new Masonic Temple in Lyndhurst. Our suburbs are growing rapidly and there is a definite need for our Temples in these areas. New ones have already been constructed in Parma, Strongsville, Avon Lake, Berea, North Olmsted, and University Heights; new ones will soon be erected in Shaker Heights and Euclid, and now Lyndhurst will soon be in this progressive group.

Other new lodges have been constituted for Maple Heights, Solon, North Royalton, Brooklyn, and Bay Village. We hope that they, too, will soon be able to enjoy the beauties, comfort, and fine facilities that come with a new Temple.

May Woodward Lodge have every success in this very worthwhile project."  
William R. Pringle, M.W., P.G.M.

From a sincere Past Master: "Now is the time for all good men to put their shoulders to the wheel, and help build this monument to Masonry. Masonry does not make a bad man good, but it does make a good man better. The type of men we desire to become Masons, have moved from our present location, to outlying neighborhoods. It is high time we were going to them. We will become the landmark to Lyndhurst as we were to Doan's Corners. I believe in our new temple, we will get better attendance, more affiliations, more candidates, and grow with Lyndhurst. We are going to our new home, let's back it with our efforts and our money. United we stand, and if we go at this new project as a unit, we will surprise ourselves with the results of our effort."  
Ed. Stancombe, P.M.

Your Master says:  
"Brethren—

The continued strength of Masonry rests directly on the shoulders of you, the brethren of today. Progress is everywhere about us. Much has been done to develop church facilities; more hospitals; more schools. The world of today needs the teachings of Masonry; the progress of this fraternity is our responsibility.

Let us dedicate ourselves to provide for the future as our brethren provided for us in the past. Let us look up—Look back—Let us all look forward together to a new era in Masonry."

E. John Davies, W.M.

## TAKE STOCK IN THE FUTURE OF MASONRY

Once again, the membership of Woodward Lodge and associated Lodges and bodies must turn a dream into reality. The new temple is not far from the brick-and-mortar stage, we've already made considerable progress, the land is purchased and paid for, the plans completed, and the builder chosen.

The General Contractor, The Hamann Construction Company, 36931 Euclid Avenue, Willoughby, Ohio.

The Architects and Engineers, Rudolph J. Orgler & Associates, 7113 Euclid Avenue, Cleveland 3, Ohio.

"To design a temple which is to replace Woodward Temple meant a challenge: We had to carry the noble tradition of the old building into the new building, to create adequate facilities for all the bodies and to design an edifice of which we could be proud today and to which the Masons who will follow us will be attracted. Those were the thoughts which caused your architect—with the invaluable assistance of your building committee—to design a building which is modern today and which we hope will still be modern many years from now".

Rudolph J. Orgler, Architect

The cost of the land in Lyndhurst, the estimated cost of the new building, its furnishings and equipment, its landscaping and parking, is \$550,000. Woodward Lodge has up to \$100,000 toward the site, architect fees and other expenses. About another \$150,000 could be realized by selling the present temple . . .

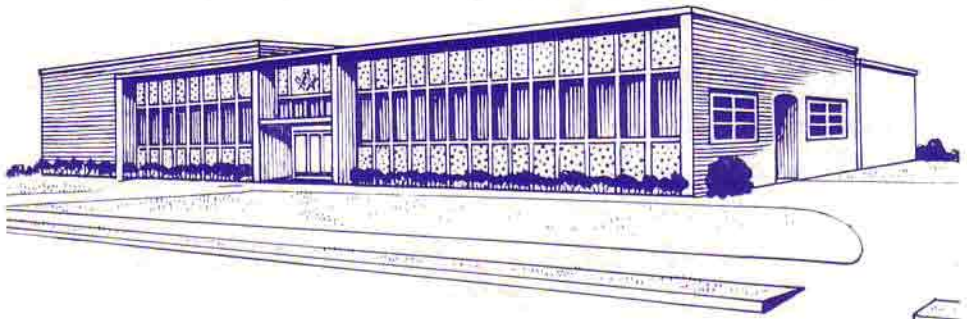
So to turn our dream into reality, another \$300,000 is needed. This amount must be raised through the issuance of stock which will be sold at \$10 per share. The purchasers will be YOU—Masons and Eastern Stars as individuals, in addition to the Masonic bodies themselves. It is hoped that your purchases will be in five share lots.

The stock may be procured by one of these methods:

1. **Cash purchase.**
2. **Subscription—where stock will be issued as paid for in five share lots.**  
(For example; if you subscribe for 20 shares, payable \$50 per quarter, you will be issued five shares of stock upon payment of the \$50 each quarter.)
3. **Pay as you go—a minimum of \$5 per month for 10 months.**  
When you have paid in your \$50, five shares of stock will be issued to you.

Donations and gifts would, of course, also be warmly welcomed. But the heart of our effort to build a new temple is the stock plan. There's a stock application blank in this brochure that we hope you'll use.

Stock may be sold back to the Woodward Temple Company if individual emergency arises. However, the Woodward Temple Company must be given the option to buy back the stock at par value of \$10 per share or suggest an eligible buyer for the stock. A concerted effort will be made to amortize up to \$5,000 worth of stock each year or at least that amount will be set aside for future redemption.



LYNDHURST TEMPLE



A MOVE IS A MUST



WOODWARD TEMPLE

