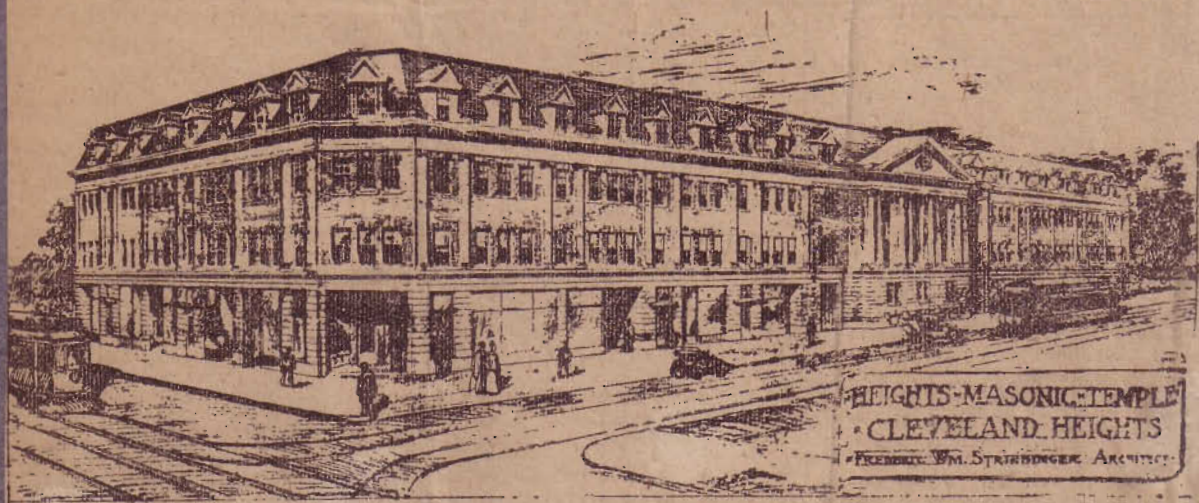


ACTIONS IN REAL ESTATE AN

HEIGHTS MASONS PLAN \$100,000 TEMPLE



TEMPLE AND PARK TO ADORN HEIGHTS

Masons Plan \$100,000
Structure for New Lodge
on Mayfield-rd.

Civic League Will Ask Council for Two-Mile
Boulevard.

Plans for a parkway system from 100 to 500 feet wide and extending for over two miles through Cleveland Heights are to be presented to the Cleveland Heights council at its meeting tomorrow evening by a committee representing the Cleveland Heights Civic league.

The proposed parkway system closely follows action by Cleveland Heights Masons to organize a Masonic lodge and to construct a Masonic temple and commercial building at Mayfield road and Lee road, costing \$100,000.

Organization of the new lodge is all but completed and work of financing the temple and commercial building has begun by Cleveland Heights Masons, who are of the opinion that the corner of Mayfield road and Lee road is destined in the near future to be a second Euclid-av and E. 105th-st.

The Cleveland Heights council is to be asked, after obtaining an estimate of cost of purchasing from owners of the ravine route which the parkway is to follow, to submit the question of issuing bonds to raise funds to finance the deal, to the Cleveland Heights citizens.

The first section of the proposed parkway is to start at Mayfield road, near Superior road and follow the ravine through Cleveland Heights to Cedar road. It will be a link in the proposed system of boulevards surrounding Cleveland.

The movement looking toward construction of the parkway had its origin in the Cleveland Heights Civic league. After several meetings at which the matter was discussed, a committee was appointed to investigate the question and make a report. A report was submitted at a meeting of the league several days ago, when it was decided to lay the plans before the village council for its action.

Work on the new Masonic temple and commercial building, which is to be a four-story brick structure with 154 feet frontage on Lee road and 80 feet frontage on Mayfield road, is expected to be started in the spring. The commercial building is to be made up of eight stores and eight suites. Frederic William Striebinger, 1900 Euclid-av is the architect.

On the first floor of the temple which is to be three stories high, is to be a ball room and assembly hall adequate to seat 500 people. A part of the second floor will occupy space in height of the two upper floors and will contain a lodge room ample in size for the work of a large lodge.

The dimensions of the lodge room will be about the same as those in Woodward lodge, near Euclid-av and E. 105th-st and will include some innovations. A banquet hall will be located in the basement.

The arrangement of the commercial building is on the plan of eight units, patterned after structures in Forest Hills garden of the Russell Sage foundation in New York.

In each unit above the eight stores of the commercial building is to be an apartment containing two stories and an attic. The apartments will contain nine rooms and two baths each.